

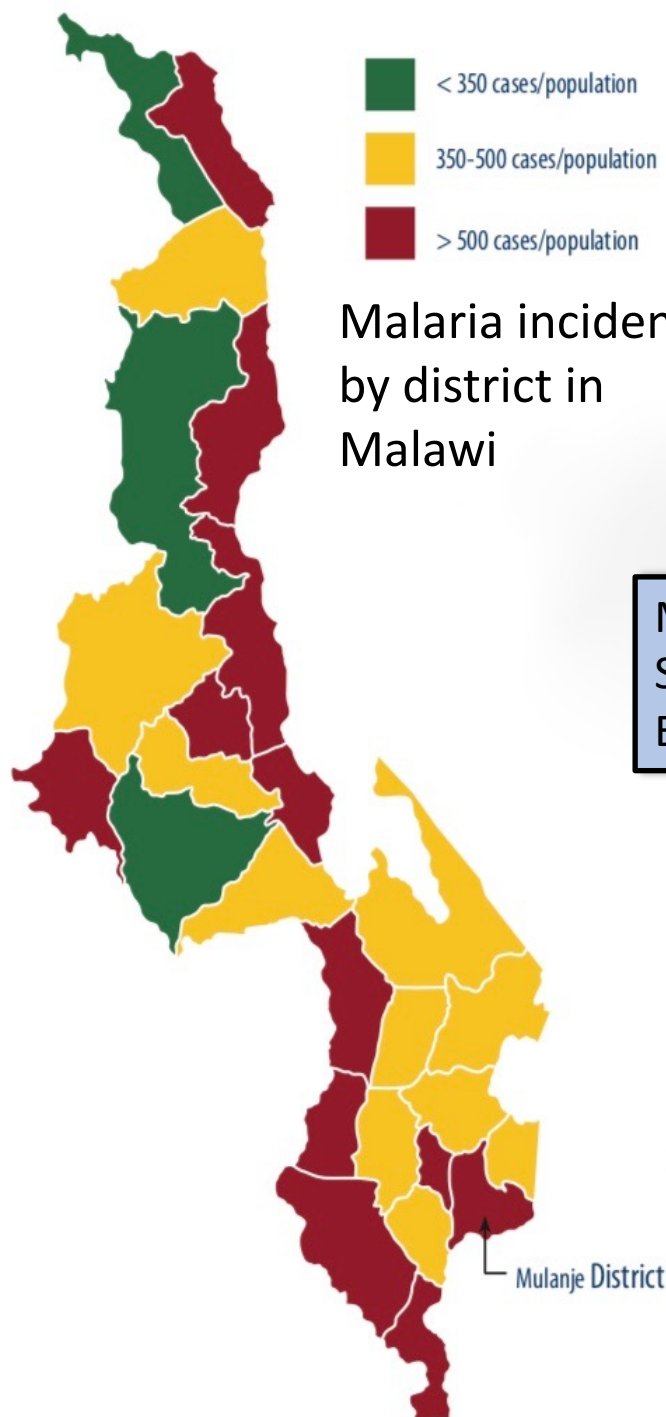


SALAMBA HEALTH POST

# Partnering for Impact

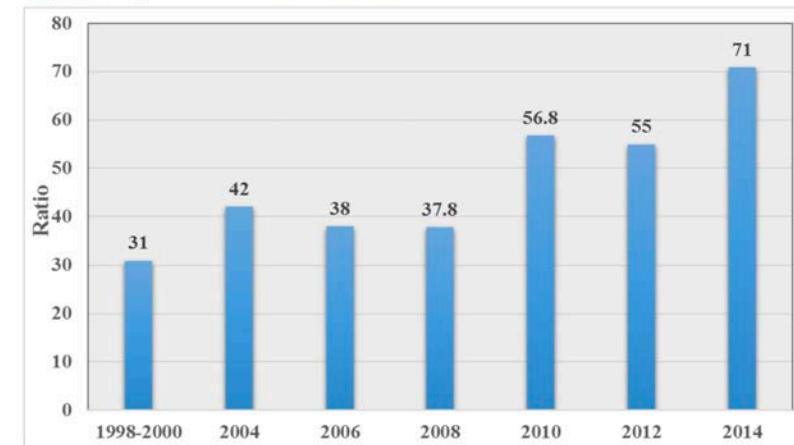
Dr Ruth Shakespeare  
Mulanje Mission Hospital  
Malawi





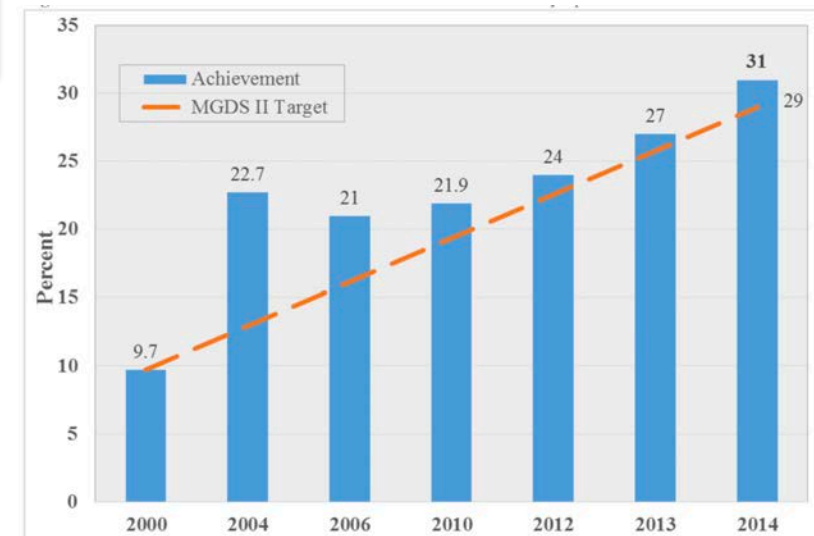
Malaria incidence  
by district in  
Malawi

Malawi:  
Source: UNDP Malawi MDGs  
Endline Report 2017



Source: National Malaria Control Programme

% households with at least one ITN



Source: National Malaria Control Programme

MDG 6: access to malaria treatment  
within 24hrs of onset of symptoms

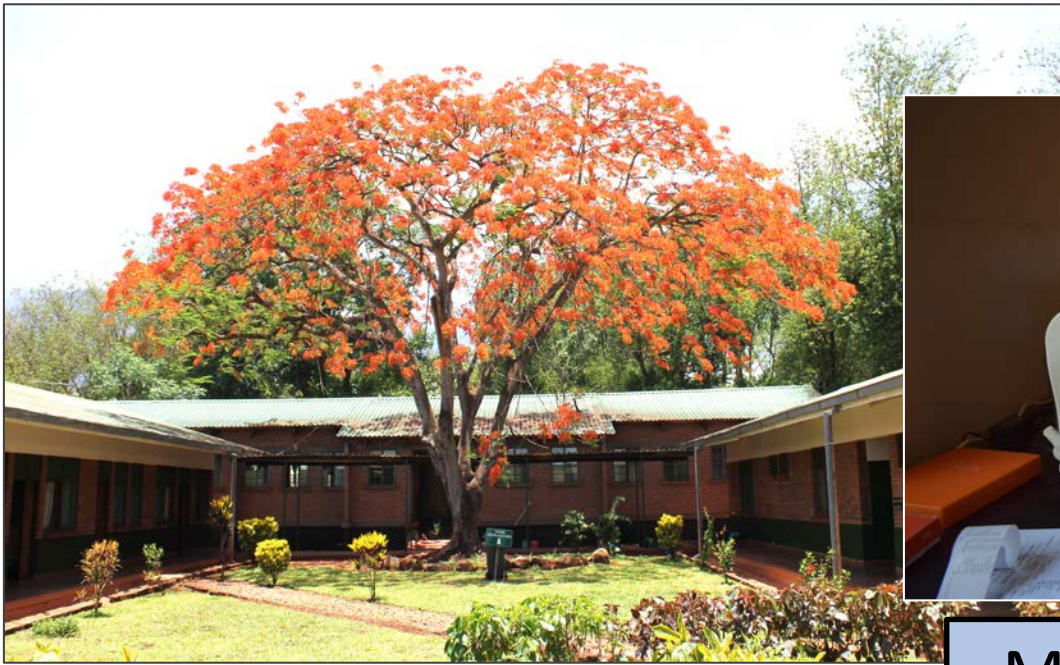




Mulanje  
District





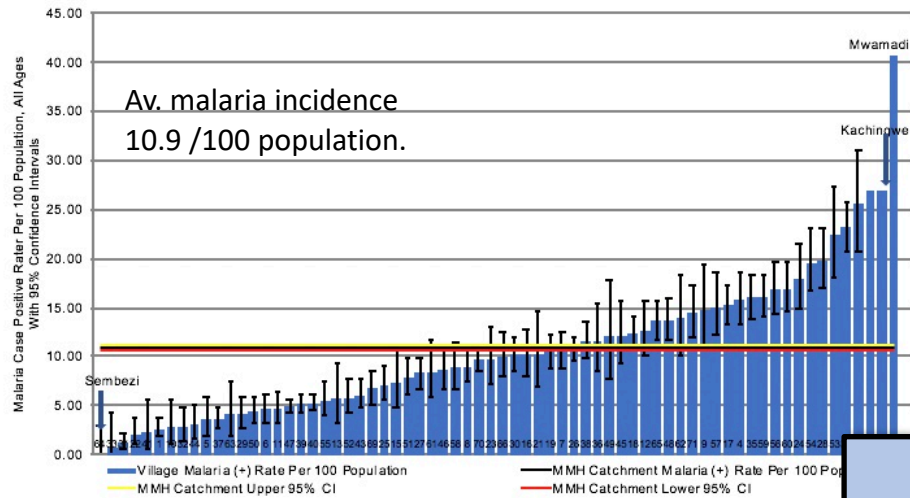


Mulanje Mission  
Hospital





## Malaria cases per 100 population by village before IRS



## Villages with Statistically Lower, Similar and Higher Rates Compared to the Catchment Average Rate:

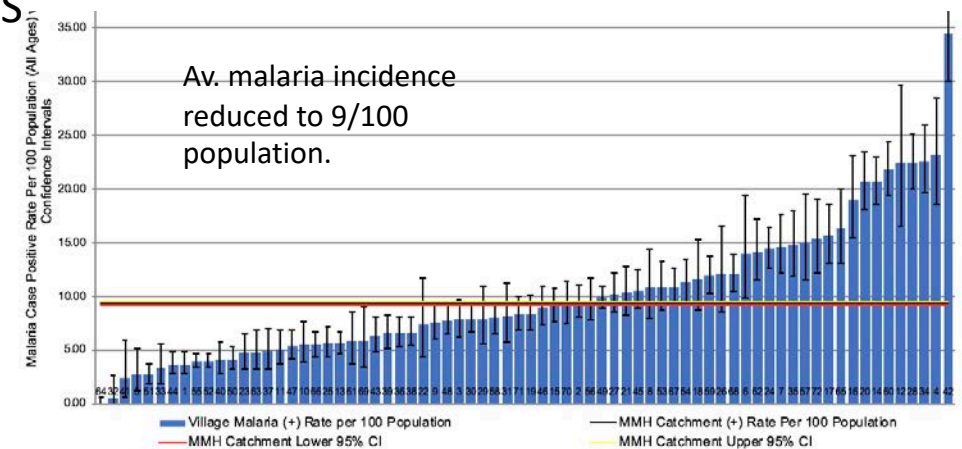
1	Bokosi	26	Makoloma	49	Namputu
4	Chigwembere	27	Makwale	50	Nankhumwa
5	Chikwenda	28	Mamera	51	Ndala
6	Chilembwe	29	Mandanda	52	Ngolowera
7	Chilenga	30	Mangani	53	Ng'oma
8	Chilungo	31	Manyangala	54	Niema
9	Chitambi	32	Mataka	55	Nkhonya
10	Demula	33	Mbwina	56	Nkhuku
11	Ekhamuno	34	Misanjo	57	Nkumbi
12	Gilbert	35	Misyenje	58	Nkutha
13	Gulumba	36	Mitumbira	59	Robeni
14	Kachingwe	37	Mmina	60	Salamba
15	Kadewere	38	Mphika	61	Salimu
16	Kandulu	39	Mponda	62	Samson
17	Kang'oma	40	Musisi	63	Sapuwu
18	Kathebwwe	41	Mwachumu	64	Sembezi
19	Khoviwa	42	Mwamadi	65	Sikoya
20	Kumponda	43	Mwanamvula	66	Sitolo
21	Kunthanguwo	44	Nakhutho	69	Tchaluwa
22	Liwaya	45	Naliya	70	Waluma
23	Lowa	46	Namakhutcha	71	Wasi
24	Luwanje	47	Namatingwi	72	Zipangani
25	Majawa	48	Namijingo		

- Villages with a statistically lower rate than the MMH catchment rate  
 - Villages with a statistically similar rate to the MMH catchment rate  
 - Villages with a statistically higher rate to the MMH catchment rate

MMH  
2011-12



## Malaria cases per 100 population by village after Year One IRS



## MMH Approach: Integrated vector control

- ITNs
- IRS – from 2012
- LSM – from 2017
- Case management
- IPTp
- Surveillance and sensitivity testing



## MMH Malaria control strategy



### IRS: summary of MMH programme

Year One	2012/13	4 villages	alphacypermethrin
Year 2	13/14	22	alphacypermethrin
Year 3	14/15	40	alphacypermethrin
Year 4	15/16	55	alphacypermethrin
Year 5	16/17	35	Actellic 300CS
Year 6	17/18	51	Actellic 300CS
Year 7	18/19	42	Actellic 300CS
Year 8	19/20	target 50	Sumishield



## Resistance in MMH catchment 2016

INSECTICIDE	INSECTICIDE CLASS	MEAN MORTALITY (%)
Alphacypermethrin	Pyrethroid	53
Fenithrothion	Organophosphate	94
DDT	Organochlorine	95
Propoxur	Carbamate	47
Permethrin	Pyrethroid	73



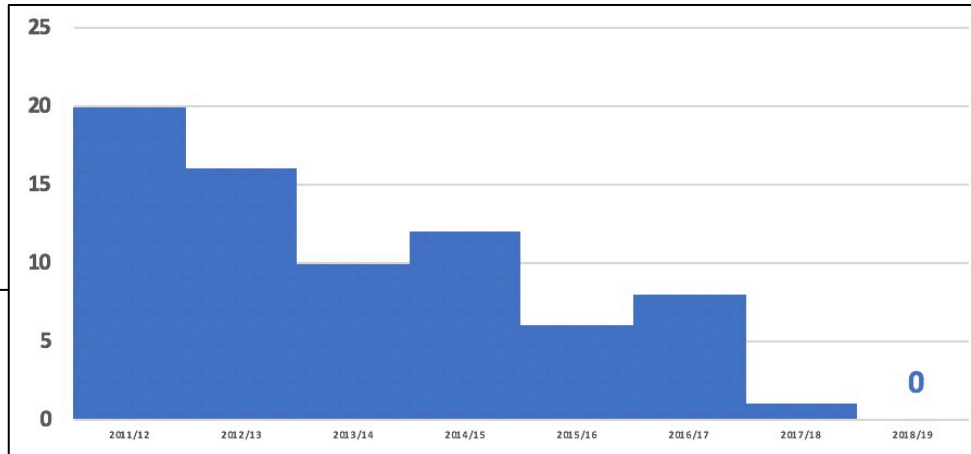
## Some of the Challenges



..... and a few others

- Managing numerous priorities without neglecting the involvement of key people
- Finding more and more unmet need – by making services more accessible/acceptable
- Technical limitations of an evidence-based approach where evidence is poor or non-existent

### Outcome 1: Under 5 mortality Under 5s: Total malaria deaths in the catchment area



### Outcome 2: Under 5 admissions Under 5s: No of malaria admissions Oct – April

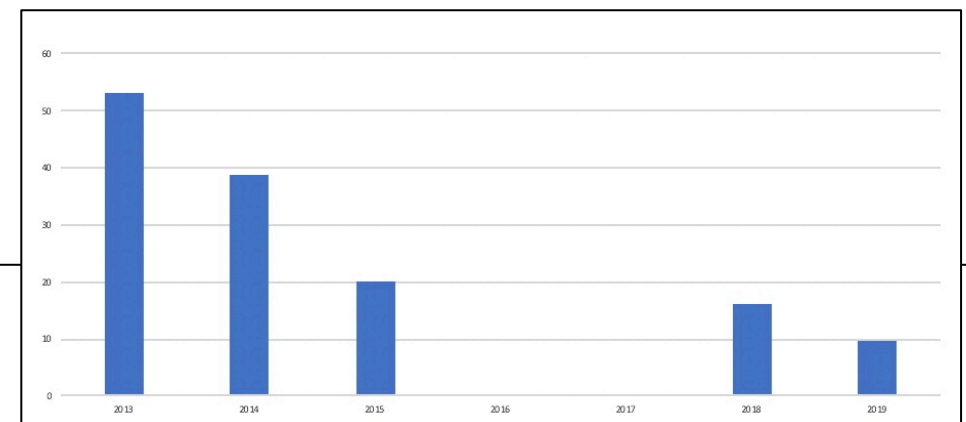
2010/11 - baseline	2754
12/13	1482
13/14	1245
14/15	1111
15/16	758
16/17	201
17/18	173
18/19	156

### Outcome 3: Malaria Cases 5 yrs + Total cases seen (IP and OP ) 5yrs +

2010/11 - baseline	5304
12/13	3394
13/14	2415
14/15	2806
15/16	3928
16/17	1837
17/18	1249
18/19	713

## MMH IRS Outcomes

### Outcome 4: parasitaemia % MRDT+ve Mwamadi village 2013 - 2019







## MMH IRS Outcomes





# Impact: Umfumu Mwamadi

## Group Village Headman, Mwamadi village





## Increasing impact and sustainability ?

New effective nets NOW

Longer lasting chemicals for IRS  
(climate change, constant workload, maintain skills)

Affordable IRS

Better application tools– less room for error, less waste

Better evidence for LSM

Outdoor protection

Improved supply chain management

Improved training tools





Government of Malawi  
NMCP



University of Malawi, Chancellor College

**EMMS**International  
Health for Today, Hope for Tomorrow



Mulanje Mission Hospital



Zero by 40?  
Together, yes we can!



U.S. President's Malaria Initiative





